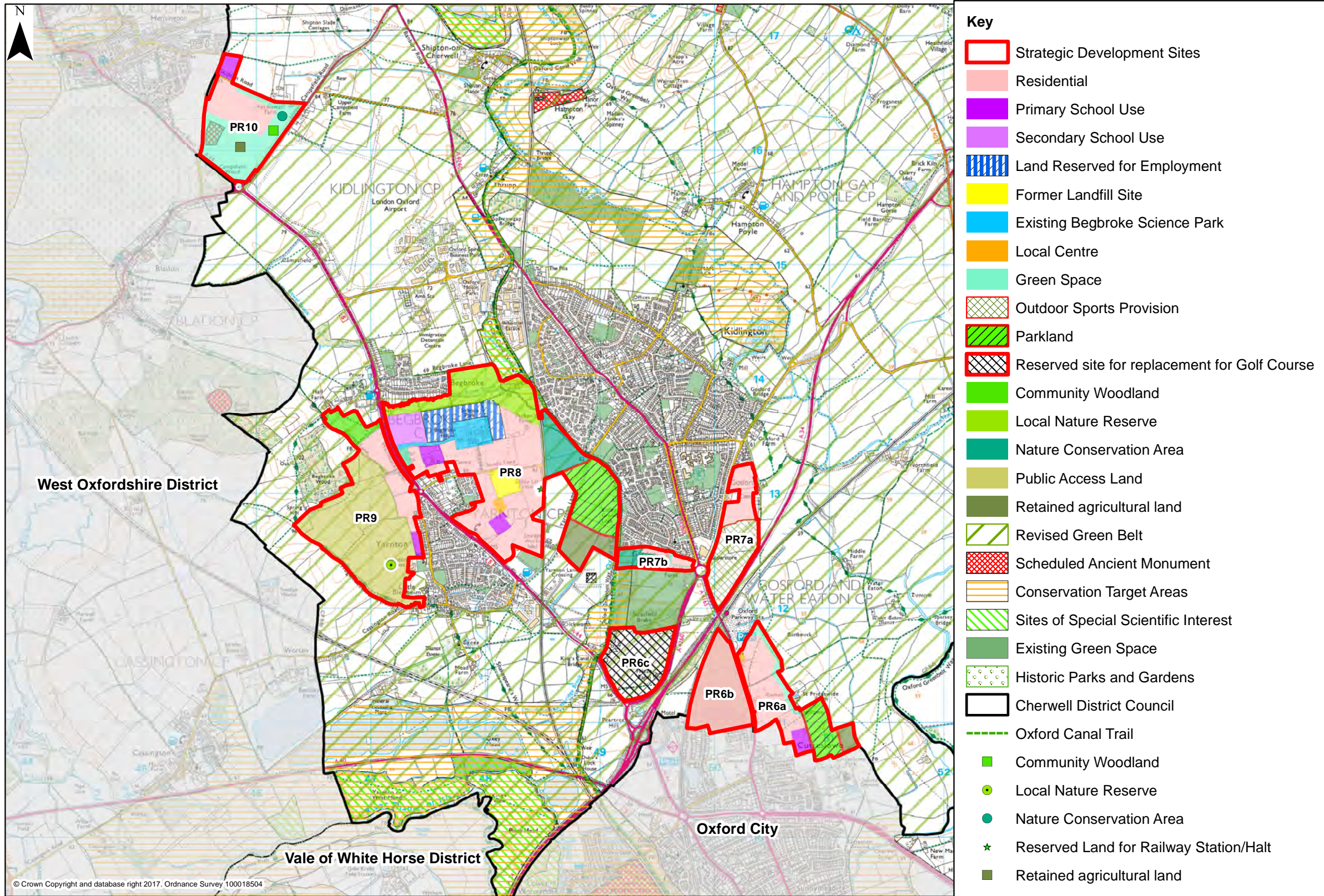


Appendix I - Policies Map

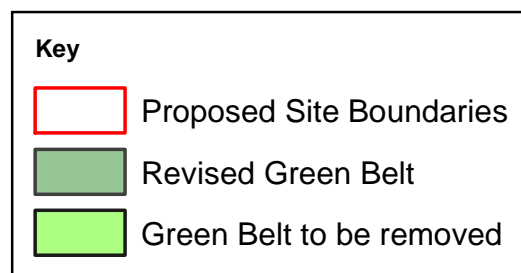
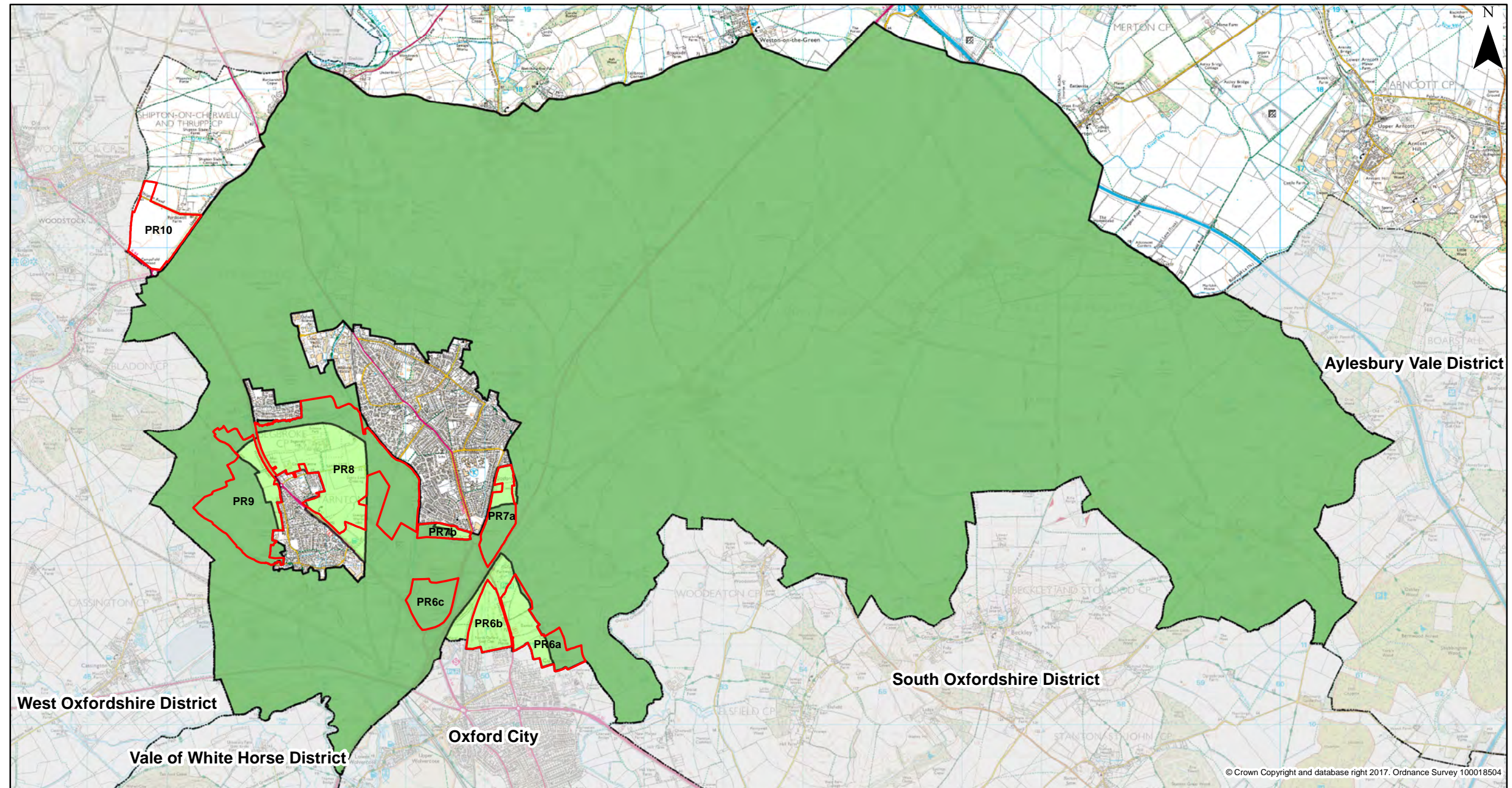
Partial Review of the Cherwell Local Plan 2011-2031 (Part 1) - Proposed Submission
 Appendix 1 - Policies Map



- Key**
- Strategic Development Sites
 - Residential
 - Primary School Use
 - Secondary School Use
 - Land Reserved for Employment
 - Former Landfill Site
 - Existing Begbroke Science Park
 - Local Centre
 - Green Space
 - Outdoor Sports Provision
 - Parkland
 - Reserved site for replacement for Golf Course
 - Community Woodland
 - Local Nature Reserve
 - Nature Conservation Area
 - Public Access Land
 - Retained agricultural land
 - Revised Green Belt
 - Scheduled Ancient Monument
 - Conservation Target Areas
 - Sites of Special Scientific Interest
 - Existing Green Space
 - Historic Parks and Gardens
 - Cherwell District Council
 - Oxford Canal Trail
 - Community Woodland
 - Local Nature Reserve
 - Nature Conservation Area
 - Reserved Land for Railway Station/Halt
 - Retained agricultural land

Appendix 2 - Green Belt Plan

Partial Review of the Cherwell Local Plan 2011-2031 (Part 1) - Proposed Submission
Appendix 2 Proposed changes to the Green Belt within Cherwell District



© Crown Copyright and database right 2017. Ordnance Survey 100018504

Appendix 3 - Housing Trajectory

Partial Review of the Cherwell Local Plan 2011-2031 (Part 1) – Proposed Submission
Appendix 3 – Housing Trajectory

Partial Review of the Local Plan - Housing Trajectory															
Total Plan Requirement (2021-2031)	4400 Homes														
Plan Requirement (2021-2026)	1700 Homes														
	Allocation	Scheme & Site Preparation			1st Five Year Supply Period										Total
		18/19	19/20	20/21	21/22	22/23	23/24	24/25	25/26	26/27	27/28	28/29	29/30	30/31	
North Oxford															
Policy PR6a – Land East of Oxford Road	650	0	0	0	25	50	75	100	100	100	100	50	50	0	650
Policy PR6b – Land West of Oxford Road	530	0	0	0	0	0	30	75	75	75	75	75	75	50	530
Kidlington															
Policy PR7a – Land South East of Kidlington	230	0	0	0	0	0	0	0	0	30	50	50	50	50	230
Policy PR7b – Land at Stratfield Farm	100	0	0	0	25	50	25	0	0	0	0	0	0	0	100
Begbroke															
Policy PR8 – Land East of the A44	1950	0	0	0	50	100	225	225	225	225	225	225	225	225	1950
Yarnton															
Policy PR9 – Land West of Yarnton	530	0	0	0	30	75	75	75	100	100	50	25	0	0	530
Woodstock															
Policy PR10 – Land South East of Woodstock	410	0	0	0	0	0	0	0	0	50	100	100	100	60	410
Total	4400	0	0	0	130	275	430	475	500	580	600	525	500	385	4400
Five Year Housing Land Supply Requirement															
Housing Requirement 2021-2026	1700														
Annual Requirement	340														
Requirement to date	0														
Completions	0														
Shortfall / Surplus	0														
Base Requirement over next 5 years	1700														
Base requirement with shortfall / surplus	1700														
Plus 5% (NPPF)	1785														
Annual requirement over next 5 years	357														
Deliverable supply over next 5 years	1810														
Total years supply	5.1														

Appendix 4 - Infrastructure Schedule

No.	Projects	Main aim	Priority	Phasing	Costs	Funding	Main Delivery Partners	Policy links	LPI PR site policy	Source	Delivery status
Transport & movement											
1.	Explore potential for a new rail station/halt between Kidlington and Begbroke	Identify potential for future new rail services and stations that reduce the reliance on private car for inter urban travel	Desirable	Long term	TBC	TBC	Network Rail, OCC, Rail providers, Begbroke Science Park/Oxford University	LPI: Improved Transport and Connections (SLE4) LPI PR: Sustainable Transport (PR4a) LPI PR: Infrastructure Delivery (PR11)	All LPI PR sites	LPI PR representations on behalf of OU	
2.	Expansion of Water Eaton P&R	Reduce the proportion and overall number of car journeys and help deliver the transport changes provided for by the Oxford Transport Strategy.	Necessary	Long term	TBC	TBC	OCC, bus service providers, private developers	LTP4 LPI: Improved Transport and Connections (SLE4) LPI PR: Sustainable Transport (PR4a) LPI PR: Infrastructure Delivery (PR11)	All LPI PR sites,	OCC OTS	
3.	Explore potential for a P&R at London Oxford Airport	Reduce the proportion and overall number of car journeys and help deliver the transport changes provided for by the Oxford Transport Strategy.	Necessary	Long term	TBC	TBC	OCC, bus service providers, private developers	LTP4 LPI: Improved Transport and Connections (SLE4) LPI PR: Sustainable Transport (PR4a) LPI PR: Infrastructure Delivery (PR11)	All LPI PR sites	OCC OTS	
4.	Bus Lane improvements along the A4260/A4165	Reduce the proportion and overall number of car journeys and help deliver the transport changes provided for by the Oxford Transport Strategy.	Critical	Medium term	TBC	TBC	OCC, bus service providers, private developers	LTP4/OTS LPI: Improved Transport and Connections (SLE4) LPI PR: Sustainable Transport (PR4a) LPI PR: Infrastructure Delivery (PR11)	All LPI PR sites	OCC OTS TA (ITP)	

No.	Projects	Main aim	Priority	Phasing	Costs	Funding	Main Delivery Partners	Policy links	LPI PR site policy	Source	Delivery status
4a	Improved bus lane provision on the A4165 between Kidlington roundabout and past the new housing site A4260 – southbound bus lane from The Moors to Benmead Road	Reduce the proportion and overall number of car journeys and help deliver the transport changes provided for by the Oxford Transport	Critical	Medium term	TBC	TBC	OCC, bus service providers, private developers	LTP4:OTS LPI: Improved Transport and Connections (SLE4) LPI PR: Sustainable Transport (PR4a)	All LPI PR sites		
4b	A4260 – southbound bus lane from The Moors to Benmead Road	Reduce the proportion and overall number of car journeys and help deliver the transport changes provided for by the Oxford Transport	Critical	Medium term	TBC	TBC	OCC, bus service providers, private developers	LTP4:OTS LPI: Improved Transport and Connections (SLE4) LPI PR: Sustainable Transport (PR4a)	All LPI PR sites		
4c	A4260 Southbound bus lane from Bicester Road/A4260 junction to Kidlington roundabout	Reduce the proportion and overall number of car journeys and help deliver the transport changes provided for by the Oxford Transport	Critical	Medium term	TBC	TBC	OCC, bus service providers, private developers	LTP4:OTS LPI: Improved Transport and Connections (SLE4) LPI PR: Sustainable Transport (PR4a)	All LPI PR sites		
4d	Northbound bus lane Summerhill Road to Davenant Road	Reduce the proportion and overall number of car journeys and help deliver the transport changes provided for by the Oxford Transport	Critical	Medium term	TBC	TBC	OCC, bus service providers, private developers	LTP4:OTS LPI: Improved Transport and Connections (SLE4) LPI PR: Sustainable Transport (PR4a)	All LPI PR sites		
4e	Southbound bus lane from Rawlinson road to St Margaret's Road	Reduce the proportion and overall number of car journeys and help deliver the transport changes provided for by the Oxford Transport	Critical	Medium term	TBC	TBC	OCC, bus service providers, private developers	LTP4:OTS LPI: Improved Transport and Connections (SLE4) LPI PR: Sustainable Transport (PR4a)	All LPI PR sites		
5	Signalised junctions along the A4260/A4165 corridor to improve bus movements	Reduce the proportion and overall number of car journeys and help deliver the transport changes provided for by the Oxford Transport Strategy.	Critical	Medium term	TBC	TBC	OCC, bus service providers, private developers	LTP4:OTS LPI: Improved Transport and Connections (SLE4) LPI PR: Sustainable Transport (PR4a) LPI PR: Infrastructure Delivery (PR11)	All LPI PR sites	OCC OTS TA (ITP)	
5a	A4260/Bicester Road Signalised junction – RT detection	Reduce the proportion and overall number of car journeys and help deliver the transport changes provided for by the Oxford Transport Strategy.	Critical	Medium term	TBC	TBC	OCC, bus service providers, private developers	LTP4:OTS LPI: Improved Transport and Connections (SLE4) LPI PR: Sustainable Transport (PR4a) LPI PR: Infrastructure Delivery (PR11)	All LPI PR sites	OCC OTS TA (ITP)	
5b	A4260/Lyne Road Signalised junction - RT detection	Reduce the proportion and overall number of car journeys and help deliver the transport changes provided for by the Oxford Transport Strategy.	Critical	Medium term	TBC	TBC	OCC, bus service providers, private developers	LTP4:OTS LPI: Improved Transport and Connections (SLE4) LPI PR: Sustainable Transport (PR4a) LPI PR: Infrastructure Delivery (PR11)	All LPI PR sites	OCC OTS TA (ITP)	
5c	Langford Lane/A4260 junction improvements with bus lanes on some approaches	Reduce the proportion and overall number of car journeys and help deliver the transport changes provided for by the Oxford Transport Strategy.	Critical	Medium term	TBC	TBC	OCC, bus service providers, private developers	LTP4:OTS LPI: Improved Transport and Connections (SLE4) LPI PR: Sustainable Transport (PR4a) LPI PR: Infrastructure Delivery (PR11)	All LPI PR sites	OCC OTS TA (ITP)	
6	Bus Lane improvements along the A44/A4144	Reduce the proportion and overall number of car journeys and help deliver the transport changes provided for by the Oxford Transport Strategy.	Critical	Medium term	TBC	TBC	OCC, bus service providers, private developers	LTP4:OTS LPI: Improved Transport and Connections (SLE4) LPI PR: Sustainable Transport (PR4a) LPI PR: Infrastructure Delivery (PR11)	PR8 PR9 PR10	OCC OTS TA (ITP)	
6a	Southbound bus lane on A44 from the new southern exit from East Yarnton (Begbroke) through to Loop Farm Roundabout	Reduce the proportion and overall number of car journeys and help deliver the transport changes provided for by the Oxford Transport Strategy.	Critical	Medium term	TBC	TBC	OCC, bus service providers, private developers	LTP4:OTS LPI: Improved Transport and Connections (SLE4) LPI PR: Sustainable Transport (PR4a) LPI PR: Infrastructure Delivery (PR11)	PR8 PR9 PR10	OCC OTS TA (ITP)	
6b	Southbound bus lane on A44, Langford Lane to Spring Hill junction	Reduce the proportion and overall number of car journeys and help deliver the transport changes provided for by the Oxford Transport Strategy.	Critical	Medium term	TBC	TBC	OCC, bus service providers, private developers	LTP4:OTS LPI: Improved Transport and Connections (SLE4) LPI PR: Sustainable Transport (PR4a) LPI PR: Infrastructure Delivery (PR11)	PR8 PR9 PR10	OCC OTS TA (ITP)	
6c	Extend Northbound bus lane on Woodstock Road to	Reduce the proportion and overall number of car journeys and help deliver the transport changes provided for by the Oxford Transport Strategy.	Critical	Medium term	TBC	TBC	OCC, bus service providers, private developers	LTP4:OTS LPI: Improved Transport and Connections (SLE4) LPI PR: Sustainable Transport (PR4a) LPI PR: Infrastructure Delivery (PR11)	PR8 PR9	OCC OTS TA (ITP)	

No.	Projects	Main aim	Priority Critical Necessary Desirable	Phasing St 2018- 2021 Mt 2021 - 2026 Lt 2026 - 2031	Costs (where known)	Funding (where known)	Main Delivery Partners	Policy links (LPI, LTP & Emerging LPI PR Policies)	LPI PR site policy	Source	Delivery status
	Bainton Road (currently stops at Moreton Road)							Delivery (PR 11)	PR10		
6d	Northbound bus lane on A44 between Langford Lane and Bladon Roundabout. Southbound bus lane from approximately 200m south of Bladon roundabout to Langford Lane		Critical	Medium term	TBC	TBC			PR8 PR9 PR10	OCC OTS TA (ITP)	
7	4 buses per hour service between Oxford and Begbroke routed Land East of the A44 development site (A44/A1144 corridor)	Reduce the proportion and overall number of car journeys and help deliver the transport changes provided for by the Oxford Transport Strategy.	Critical	Medium term	TBC	TBC	OCC, bus service providers, private developers	LPI: Improved Transport and Connections (SLE4) LPI PR: Sustainable Transport (PR4a) LPI PR: Infrastructure Delivery (PR 11)	PR8	OCC OTS TA (ITP)	
8	Junction improvements facilitating cross-corridor bus movements (A44 to/from A4260)	Reduce the proportion and overall number of car journeys and help deliver the transport changes provided for by the Oxford Transport Strategy.	Critical	Medium term	TBC	TBC	OCC, bus service providers, private developers	LTP4:OTS LPI: Improved Transport and Connections (SLE4) LPI PR: Sustainable Transport (PR4a) LPI PR: Infrastructure Delivery (PR 11)	All LPI PR sites	OCC OTS TA (ITP)	
8a	Left turn bypass lane from A4095 Upper Campsfield Road to A44		Critical	Medium term	TBC	TBC			All LPI PR sites	OCC OTS	
8b	Bus only left turn filter A44 to Langford Lane		Critical	Medium term	TBC	TBC			All LPI PR sites	TA (ITP)	
8c	Signalising A4095 Upper Campsfield Road/A4260 junction		Critical	Medium term	TBC	TBC	OCC, bus service providers, private developers		All LPI PR sites	OCC OTS	
8d	Upgrade of outbound bus stop on A4165 opposite Parkway		Critical	Medium term	TBC	TBC			All LPI PR sites	TA (ITP)	
9	Cycle super highway		Critical	Medium term	TBC	TBC	OCC private developers	LTP4:OTS LPI: Improved Transport and Connections (SLE4) LPI PR: Sustainable Transport (PR4a) LPI PR: Infrastructure Delivery (PR 11)	All LPI PR sites	TA (ITP)	
9a	Cycle super highway along the A4260/A4165 to Oxford Parkway	Reduce the proportion and overall number of car journeys and help deliver the transport changes provided for by the Oxford Transport Strategy.	Critical	Medium term	TBC	TBC	OCC private developers				
9b	Cycle super highway along A4165 from Oxford Parkway to Oxford city centre		Critical	Medium term	TBC	TBC	OCC private developers				
10.	Sandy Lane – pedestrian and cycle new link over railway	Improve sustainable cross corridor connections between the A44 and the	Critical	Medium term	TBC	TBC	OCC private developers	LPI: Improved Transport and Connections (SLE4) LPI PR: Sustainable Transport (PR4a)	PR8	OCC TA (ITP)	

No.	Projects	Main aim	Priority	Phasing	Costs	Funding	Main Delivery Partners	Policy links	LPI PR site	Source	Delivery status
		A4260	Critical Necessary Desirable	St.2018- 2021 Mt.2021 -2026 Lt 2026 - 2031	TBC	TBC	OCC private developers	LPI PR: Infrastructure Delivery (PR I I) LTP4:OTS LPI: Improved Transport and Connections (SLE4) LPI PR: Sustainable Transport (PR4a) LPI PR: Infrastructure Delivery (PR I I)	PR10 PR9 PR8 All LPI PR sites	OCC TA (ITP) OCC TA (ITP)	
11.	Cycle and pedestrian improvements	Reduce the proportion and overall number of car journeys and help deliver the transport changes provided for by the Oxford Transport Strategy.	Critical	Medium term	TBC	TBC	OCC private developers	LTP4:OTS LPI: Improved Transport and Connections (SLE4) LPI PR: Sustainable Transport (PR4a) LPI PR: Infrastructure Delivery (PR I I)	PR10 PR9 PR8 All LPI PR sites	OCC TA (ITP) OCC TA (ITP)	
11a	Cycle and pedestrian improvements along the A44 (between Bladon Roundabout and Peartree Roundabout) enabling: a) improved cycling facilities to link onto planned improvements to Pear Tree Roundabout and cycle route along Woodstock Road (south of the A34) into Oxford b) high quality crossing for shared use path through Langford Lane junction and across the A44 (Shared Use Path improvements and new provision)										
11b	Cycle and pedestrian improvements along Langford Lane including enhancement to formalise crossing. Shared Use Path (SUP) on the western end of Langford Lane and hybrid cycle lanes for the eastern end.										
12.	Public Realm improvements on the A4260 between Benmead Road and Yarnton Road	Integration of land use and transport in response to provide safe and attractive environments particularly in and around settlement centres	Desirable	Medium term	TBC	TBC	OCC private developers	LTP4:OTS LPI: Improved Transport and Connections (SLE4) LPI PR: Sustainable Transport (PR4a) LPI PR: Infrastructure Delivery (PR I I) LPI PR: Infrastructure centre (PR4b) Kidlington Masterplan	All LPI PR sites	OCC TA (ITP)	
12a	20mph zone in centre of Kidlington on A4260 between Lyne Road and Sterling Approach	Integration of land use and transport in response to provide safe and attractive	Desirable	Medium term	TBC	TBC	OCC private developers	LPI PR: Infrastructure centre (PR4b) Kidlington Masterplan	All LPI PR sites	OCC TA (ITP)	

No.	Projects	Main aim	Priority Critical Necessary Desirable	Phasing St 2018- 2021 Mt 2021 - 2026 Lt 2026 - 2031	Costs (where known)	Funding (where known)	Main Delivery Partners	Policy links (LPI, LTP & Emerging LPI PR Policies)	LPI PR site policy	Source	Delivery status
		environments particularly in and around settlement centres									
13	Pedestrian/Cycle bridges (wheelchair accessible)	Improving sustainable transport accessibility and active travel	Critical	Medium term	TBC	TBC	OCC private developers	LTP4:OTS LPI: Improved Transport and Connections (SLE4)	N/A	N/A	
13a	Pedestrian/Cycle bridge over the Oxford Canal and Railway	transport accessibility and active travel	Critical	Medium term	TBC	TBC	OCC private developers	LPI PR: Sustainable Transport (PR4a)	PR8	TA (ITP)	
13b	Sandy Lane Level Crossing pedestrian/cycle bridge		Critical	Medium term	TBC	TBC	OCC private developers	LPI PR: Infrastructure Delivery (PR11) LPI PR: Infrastructure		OCC TA (ITP)	
13c	Pedestrian/Cycle bridge over the Oxford Canal linking Stratfield Farm (PR7b) to Land East of the A44 (PR8)	Improving sustainable transport accessibility and active travel	Critical	Medium term	TBC	TBC	OCC private developers	LTP4:OTS LPI: Improved Transport and Connections (SLE4)	PR7b PR8	OCC TA (ITP)	
13d	Upgrade existing footbridge over the railway linking to Northern Gateway to pedestrian/cycle/Wheelchair accessible providing links to Northern Gateway		Critical	Medium term	TBC	TBC	OCC private developers	LPI PR: Sustainable Transport (PR4a) LPI PR: Infrastructure Delivery (PR11) LPI PR: Infrastructure	PR6b	OCC TA (ITP)	
13e	Kidlington roundabout: provision of pedestrian/cycle crossing at the roundabout and exploring the potential for a pedestrian/cycle bridge over Frieze Way		Critical	Medium term	TBC	TBC	OCC private developers		PR6a PR6b PR7a PR7b	OCC	
14	Reduction of speed limit and pedestrian/cycling crossing at key locations along the A44 (from Sandy Lane to Cassington Road)	Improving sustainable transport accessibility and active travel	Critical	Medium term	TBC	TBC	OCC private developers	LTP4:OTS LPI: Improved Transport and Connections (SLE4)	PR9 PR8	OCC TA (ITP)	
15	Footpaths/cycleways within proposed development sites that link new development to existing and proposed networks	Improving sustainable transport accessibility and active travel	Critical	Medium term	TBC	TBC	OCC private developers	LTP4:OTS LPI: Improved Transport and Connections (SLE4) LPI PR: Sustainable Transport (PR4a) LPI PR: Infrastructure	All LPI PR sites	PRoW Management Plan 2014	

No.	Projects	Main aim	Priority Critical Necessary Desirable Critical	Phasing St.2018- 2021 Mt.2021 - 2026 Lt 2026 - 2031 Medium term	Costs (where known)	Funding (where known)	Main Delivery Partners	Policy links (LPI, LTP & Emerging LPI PR Policies)	LPI PR site policy	Source	Delivery status
15a	Pedestrian/cycling/wheelchair accessibility from land east of Oxford Road (PR6a) to Water Eaton Park and Ride and Oxford Parkway Station		Critical	Medium term	TBC	TBC	OCC private developers	Delivery (PR11) LPI PR: Infrastructure	PR6a	TA (ITP)	
15b	Pedestrian/cycling/wheelchair accessibility from land west of Oxford Road (PR6b) to the employment opportunities at Oxford's Northern Gateway	Improving sustainable transport accessibility and active travel	Critical	Medium term	TBC	TBC	OCC private developers	LTP4:OTS LPI: Improved Transport and Connections (SLE4) LPI PR: Sustainable Transport (PR4a) LPI PR: Infrastructure Delivery (PR11) LPI PR: Infrastructure	PR6b	TA (ITP)	
15c	Pedestrian/cycling/wheelchair accessibility across A4165 from Land west of Oxford Road (PR6b) to services and facilities at Land East of Oxford Road (PR6a) and Oxford Parkway		Critical	Medium term	TBC	TBC	OCC private developers	Delivery (PR11) LPI PR: Infrastructure	PR6b	TA (ITP)	
15d	Footway along southbound carriage way of Bicester Road	Improving sustainable transport accessibility and active travel	Critical	Medium term	TBC	TBC	OCC private developers	LTP4:OTS LPI: Improved Transport and Connections (SLE4) LPI PR: Sustainable Transport (PR4a) LPI PR: Infrastructure Delivery (PR11) LPI PR: Infrastructure	PR7a	TA (ITP)	
15e	Pedestrian/cycling/wheelchair accessibility to Oxford Parkway, Water Eaton P&R, across to Bicester Road and to formal sports pitches on site	Improving sustainable transport accessibility and active travel	Critical	Medium term	TBC	TBC	OCC private developers	LTP4:OTS LPI: Improved Transport and Connections (SLE4) LPI PR: Sustainable Transport (PR4a) LPI PR: Infrastructure Delivery (PR11) LPI PR: Infrastructure	PR7a	CDC	
15f	Walking/cycling/ wheelchair accessibility from land at Stratfield Farm (PR7b) to Land east of the A44 (PR8) (including suitable crossing over the Oxford Canal)	Improving sustainable transport accessibility and active travel	Critical	Medium term	TBC	TBC	OCC private developers	Delivery (PR11) LPI PR: Infrastructure	PR7b PR8	TA (ITP)	
15g	Walking/cycling/ wheelchair accessibility from land at Stratfield Farm (PR7b) to key facilities on the A4165 including proposed sporting facilities at Land South East.	Improving sustainable transport accessibility and active travel	Critical	Medium term	TBC	TBC	OCC private developers	LTP4:OTS LPI: Improved Transport and Connections (SLE4) LPI PR: Sustainable Transport (PR4a) LPI PR: Infrastructure	PR7b	CDC	

No.	Projects	Main aim	Priority Critical Necessary Desirable	Phasing St 2018- 2021 Mt 2021 - 2026 Lt 2026 - 2031	Costs (where known)	Funding (where known)	Main Delivery Partners	Policy links (LPI, LTP & Emerging LPI PR Policies)	LPI PR site policy	Source	Delivery status
	Kidlington (PR7a) and Oxford Parkway Canal							Delivery (PR I I) LPI PR: Infrastructure			
15h	Create pedestrian, cycle and wheelchair friendly crossings which link new development at Land South East of Woodstock to existing and proposed networks including Oxford Road and Campsfield Road.	Improving sustainable transport accessibility and active travel	Critical	Medium term	TBC		OCC private developers		PR10	CDC	
15i	Pedestrian and cycle improvements linking Kidlington, Begbroke and Yarnton: Potential closure/unused of Sandy Lane to form green cycle/pedestrian route linking the A44 and the A4260 (Subject to consultation with OCC). This will be the central spine of a network of footpaths/cycle ways through Land east of the A44 (PR8) and it will be cycle/pedestrian/wheelchair accessible. Improving Green Lane linking Sandy Lane/Yarnton Road and the A44 to become a cycle track.	Improving sustainable transport accessibility and active travel	Critical	Medium term	TBC	TBC	OCC private developers	LTP4:OTS LPI: Improved Transport and Connections (SLE4) LPI PR: Sustainable Transport (PR4a) LPI PR: Infrastructure Delivery (PR I I) LPI PR: Infrastructure	PR8	TA (ITP)	
15j	New walking and cycling routes from Land West of Yarnton (PR9) through Yarnton	Improving sustainable transport accessibility and active travel	Critical	Medium term	TBC	TBC	OCC private developers	LTP4:OTS LPI: Improved Transport and Connections (SLE4) LPI PR: Sustainable Transport (PR4a) LPI PR: Infrastructure Delivery (PR I I) LPI PR: Infrastructure	PR9	TA (ITP)	
15k	Pedestrian, cycle and wheelchair connections between Land South East of Woodstock and Woodstock including provision and improvement along the A44	Improving sustainable transport accessibility and active travel	Critical	Medium term	TBC	TBC	OCC private developers	LTP4:OTS LPI: Improved Transport and Connections (SLE4) LPI PR: Sustainable Transport (PR4a) LPI PR: Infrastructure Delivery (PR I I) LPI PR: Infrastructure	PR10	TA (ITP)	
15l	Pedestrian, cycle and wheelchair connections across the site linking the public open space with the wider footpath	Improving sustainable transport accessibility and active travel	Critical	Medium term	TBC	TBC	OCC private developers	LTP4:OTS LPI: Improved Transport and Connections (SLE4) LPI PR: Sustainable	PR10	CDC	

No.	Projects	Main aim	Priority	Phasing	Costs	Funding	Main Delivery Partners	Policy links	LPI PR site policy	Source	Delivery status
			Critical Necessary Desirable	St.2018- 2021 Mt.2021 - 2026 Lt 2026 - 2031	(where known)	(where known)		(LPI, LTP & Emerging LPI PR Policies)			
	network and A44 cycle route via new crossing points over the A44 and Upper Campsfield Road							Transport (PR4a) LPI PR: Infrastructure Delivery (PR11) LPI PR: Infrastructure			
15m	New public bridleways suitable for pedestrians, all-weather cycling, wheelchair use and horse riding, and connecting with existing public right of way network including existing bridleway at Dolton Lane.	Improving accessibility and active travel	Desirable	Medium term	TBC	TBC	OCC private developers	LTP4:OTS LPI: Improved Transport and Connections (SLE4) LPI PR: Sustainable Transport (PR4a) LPI PR: Infrastructure Delivery (PR11) LPI PR: Infrastructure	PR9	CDC	
15n	Public vehicular, cycle, pedestrian and wheelchair connectivity within the Land West of Yarnton site to services and facilities in Yarnton including William Fletcher Primary School, to the allocated site to the east of the A44 (Policy PR8) and to existing or new points of connection off-site and to existing or potential public transport services.	Ensure safe access and integration with existing road network	Critical	Medium term	TBC	TBC	OCC private developers	LTP4:OTS LPI: Improved Transport and Connections (SLE4) LPI PR: Sustainable Transport (PR4a) LPI PR: Infrastructure Delivery (PR11) LPI PR: Infrastructure	PR9	OCC	
15o	Creation of routes/green infrastructure links to ensure a layout that affords good access to Woodstock	Ensuring integration with existing development and transport networks, improving accessibility and active travel	Critical	Medium term	TBC	TBC	OCC private developers	LTP4:OTS LPI: Improved Transport and Connections (SLE4) LPI PR: Sustainable Transport (PR4a) LPI PR: Infrastructure Delivery (PR11) LPI PR: Infrastructure	PR10	CDC	
16	Vehicular spine route through Land East of the A44 (suitable for use by buses)	Reduce the proportion and overall number of car journeys and help deliver the transport changes provided for by the Oxford Transport Strategy.	Critical	Medium term	TBC	TBC	OCC private developers	LTP4:OTS LPI: Improved Transport and Connections (SLE4) LPI PR: Sustainable Transport (PR4a) LPI PR: Infrastructure Delivery (PR11)	PR8	TA (ITP)	

No.	Projects	Main aim	Priority	Phasing	Costs	Funding	Main Delivery Partners	Policy links	LPI PR site policy	Source	Delivery status
17	Highways Works to Kidlington Roundabout/Oxford Road to enable site access for Land at Stratfield Farm	Ensure safe access and integration with existing road network	Critical Necessary Desirable Critical	St 2018- 2021 Mt 2021 - 2026 Lt 2026 - 2031 Medium term	TBC	TBC	OCC private developers	LPI PR: Infrastructure Delivery (PR 1)	PR7b	OCC	
Education											
18	Primary School 2FE at Land East of Oxford Road	Expand the schools and colleges provision to match the needs of residents and businesses.	Critical	Medium term	TBC	TBC	OCC Private sector developers	LPI: Meeting education needs (BSC7) LPI PR: Infrastructure Delivery (PR 1)	PR6a PR7a PR7b	OCC	
19	Primary School 3FE at Land East of the A44		Critical	Medium term	TBC	TBC	OCC Private sector developers	LPI: Meeting education needs (BSC7) LPI PR: Infrastructure Delivery (PR 1)	PR8	OCC	
20	Additional playing field land (c.1.5ha) to be provided at William Fletcher Primary School to facilitate a 0.5 FE expansion of the school to a 2 FE.	Expand the schools and colleges provision to match the needs of residents and businesses.	Critical	Medium term	TBC	TBC	OCC Private sector developers	LPI: Meeting education needs (BSC7) LPI PR: Infrastructure Delivery (PR 1)	PR9	OCC	
21	Primary School 2FE at Land South East of Woodstock		Critical	Medium term	TBC	TBC	OCC Private sector developers	LPI: Meeting education needs (BSC7) LPI PR: Infrastructure Delivery (PR 1)	PR10	OCC	
22	Secondary school (900-place) at Land East of the A44 with playing pitches located to help maintain a gap between the development and Begbroke village	Expand existing and provide new schools to match the needs of residents and businesses.	Critical	Medium term	TBC	TBC	OCC Private sector developers	LPI: Meeting education needs (BSC7) LPI PR: Infrastructure Delivery (PR 1)	All sites	OCC	

No.	Projects	Main aim	Priority	Phasing	Costs	Funding	Main Delivery Partners	Policy links	LPI PR site	Source	Delivery status
23	SEN and early years school provision to meet projected needs either on site (including land) or adequate contributions to enable existing facilities to expand.		Critical	Medium term	TBC	TBC	OCC Private sector developers	LPI: Meeting education needs (BSC7) LPI PR: Infrastructure Delivery (PR11)	All sites	OCC	
Utilities											
24	Water supply links and network upgrades	Ensure utilities infrastructure grows at the same rate as communities	Critical	Short to medium term	Costs to be determined by individual developers	To be funded by TW and private developers	Thames Water Private sector developers	LPI: Public Service and Utilities (BSC9) LPI: Water Resources (ESD8) LPI PR: Infrastructure Delivery (PR11)	All sites	Thames Water on LPI IDP update	TW currently preparing AMP7 (2020-2025) which will provide specification of upgrades. To be funded and provided as development comes forward.
25	Sewerage links and treatment works upgrade										
26	Oxford WwTW upgrade potential - TBC	Ensure utilities infrastructure grows at the same rate as communities	Critical	Short to medium term	Costs to be determined by individual developers	To be funded by TW and private developers	Thames Water Private sector developers		PR6a, PR6b, PR6c, PR7a, PR7b, PR8, PR9, PR10	WCS Draft April 2017	
27	Woodstock WwTW upgrade		Critical	Short to medium term							
28	Water conservation measures	Promote sustainable use of water: Maintaining quality and adequate resources	Critical	Short to medium term	Costs to be determined by individual developers	To be funded by TW and private developers	Thames Water Private sector developers	LPI: Water Resources (ESD8) LPI: Protection of Oxford Meadows SAC (ESD9) LPI PR: Infrastructure Delivery (PR11)	All sites		Developers to engage with TW to draw up water and drainage strategies outlining the development's water and waste water infrastructure.

No.	Projects	Main aim	Priority Critical Necessary Desirable	Phasing St 2018- 2021 Mt 2021 - 2026 Lt 2026 - 2031	Costs (where known)	Funding (where known)	Main Delivery Partners	Policy links (LPI, LTP & Emerging LPI PR Policies)	LPI PR site policy	Source	Delivery status
29	Agreement in principle needed with DNO (Southern Electric Power Distribution) for any modification to overhead lines or development beneath overhead lines/undergrounding of overhead lines in relation to any development site.	Ensure utilities infrastructure grows at the same rate as communities	Critical	Short to medium term	Costs to be determined as individual development comes forward	To be funded by SEPD and private developers	SEPD Private sector developers	LPI: Public Service and Utilities (BSC9) LPI PR: Infrastructure Delivery (PR11)	PR6a PR6b PR7a PR8 PR9	SEPD Consultation Nov.16-Jan17 Consultation	
Flood risk											
30	Agreement in principle from TW that foul drainage from the site will be accepted into their network as part of any planning application	Reducing potential flooding and pollution risks from surface water.	Critical	Short to medium term	Costs to be determined as individual development comes forward	TW Private sector developers	TW Private sector developers	LPI: Sustainable Flood Risk Management (ESD6) LPI: Sustainable Drainage Systems (SuDS) (ESD7) LPI: Water Resources (ESD8)	All	SFRA L2May 2017	
31	Site specific FRA with detailed analysis and ground investigation to inform SuDS techniques and demonstrating suitable dry site access and egress for each development site.		Critical	Short to medium term	Costs to be determined as individual development comes forward	Private sector developers	EA TW Private sector developers	LPI: Protection of Oxford Meadows SAC (ESD9) LPI PR: Infrastructure Delivery (PR11)	All	SFRA L2May 2017	
32	Provision of blue corridors for public open space/ recreation within those areas of the site in FZ 3		Critical	Short to medium term		Private sector developers	EA Private sector developers		PR6a PR7a PR8	SFRA L2May 2017	
Emergency and rescue services											
-	No known schemes		N/A	N/A	N/A	N/A	N/A	N/A	N/A	N/A	N/A
Health											
33	Provision of GP health facilities: either through redevelopment of Exeter Hall to accommodate existing practices in larger premises as a preferred approach or through Local Centre space allocated as part of PR6a and PR8.	Ensure health infrastructure grows at the same rate as communities	Critical	Medium to Long term	TBC	OCCG Private developers	OCC Private developers	LPI: Securing health and wellbeing (BSC8) LPI PR: Infrastructure Delivery (PR11)	PR6a PR6b PR7a PR7b PR8 PR9	OCCG CDC	
34	Contribute to provision of GP health facilities in near	Ensure health infrastructure grows	Critical	Medium to Long term	TBC	OCCG Private	OCC Private developers	LPI: Securing health and wellbeing (BSC8)	PR10	CDC	

No.	Projects	Main aim	Priority	Phasing	Costs	Funding	Main Delivery Partners	Policy links	LPI PR site	Source	Delivery status
	Woodstock either as part of WODC resolution to approve application 16/01364/OUT or through WODC emerging Local Plan.	at the same rate as communities	Necessary Desirable	St.2018- 2021 Mt.2021 - 2026 Lt 2026 - 2031	(where known)	developers		LPI PR: Infrastructure Delivery (PR 1)			
Community infrastructure											
35	Sports hall at PR8 Secondary School for shared community use –one additional 4 court sports hall to Sport England specification 34.5 x 20 x 7.5 (690 sqm)	Ensure social infrastructure grows at the same rate as communities and there are opportunities for culture and leisure	Necessary	Medium Term	TBC	Private developers	OCC CDC Private developers	LPI: Indoor Sport Recreation and Community Facilities (BSC12) LPI PR: Infrastructure Delivery (PR 1)	All sites	CDC OCC	
36	Additional swimming pool space by replacement pool of 25m x 6 lane pool plus teaching pool at Kidlington and Gosford Leisure Centre		Necessary	Long Term	TBC	Private developers	CDC Private developers	LPI: Indoor Sport Recreation and Community Facilities (BSC12) LPI PR: Infrastructure Delivery (PR 1)	All sites	CDC	
37	Community building as part of onsite local centre at Land East of Oxford Road	Creation of a sustainable, mixed use development which provides opportunities for community cohesion	Necessary	Long Term	TBC	Private developers	CDC Private developers	LPI: Indoor Sport Recreation and Community Facilities (BSC12) LPI PR: Infrastructure Delivery (PR 1)	PR6a PR6b		
38	Community building as part of onsite local centre at Land East of A44		Necessary	Long Term	TBC	Private developers	CDC Private developers	LPI: Indoor Sport Recreation and Community Facilities (BSC12) LPI PR: Infrastructure Delivery (PR 1)	PR8		
39	Extension to Kidlington Cemetery	Ensure social infrastructure grows at the same rate as communities	Necessary	Medium to Long terms	TBC	TBC	Kidlington PC CDC Private developer	LPI: Indoor Sport Recreation and Community Facilities (BSC12) LPI PR: Infrastructure Delivery (PR 1)	PR7a		
Open space, recreation and biodiversity											
40	Oxford Canal – Improvement to towpath infrastructure	Ensure social infrastructure grows at the same rate as communities	Necessary	Medium to Long term	TBC	Private developers	CDC Private developers	LPI: Open Space, Outdoor Sport Recreation Provision (BSC10) LPI: The Oxford Canal		Canal & River Trust Nov.16-Jan17 Consultation	

No.	Projects	Main aim	Priority Critical Necessary Desirable	Phasing St 2018- 2021 Mt 2021 - 2026 Lt 2026 - 2031	Costs (where known)	Funding (where known)	Main Delivery Partners	Policy links (LPI, LTP & Emerging LPI PR Policies)	LPI PR site policy	Source	Delivery status
								(ESD16) Local Standards of Provision - Outdoor Recreation (BSC11) Green Infrastructure (ESD17) LPI PR: Infrastructure Delivery (PR11)			
41	Compensatory land for open space, countryside access and improvements	Compensatory improvements to Green Belt land environmental quality and accessibility d	Critical	Short to Medium term	TBC	Private developers	CDC Private developers	LPI: Open Space, Outdoor Sport Recreation Provision (BSC10)	PR6a PR7a PR7b PR8 PR9	CDC	
41a	c. 16 ha at Land east of the Oxford Road							Local Standards of Provision - Outdoor Recreation (BSC11)	PR6a	CDC	
41b	c. 21.45ha at Land South East of Kidlington							Local Standards of Provision - Outdoor Recreation (BSC11)	PR7a	CDC	
41c	c. 6.80 ha at Land at Stratfield Farm							Local Standards of Provision - Outdoor Recreation (BSC11)	PR7b	CDC	
41d	c. 79 ha at Land East of the A44							Local Standards of Provision - Outdoor Recreation (BSC11)	PR8	CDC	
41e	c. 82ha at Land West of Yarnton							Local Standards of Provision - Outdoor Recreation (BSC11)	PR9	CDC	
42	c. 32ha of compensatory land to ensure the protection of the Blenheim Villa SAM and the setting of Blenheim Palace WHS and Grade I Registered Park and Gardens	Compensatory improvements for the protection and improvement of historic assets	Critical	Short to Medium term	TBC	Private developers	CDC OCC ICOMOS Heritage England Private developers	LPI: The Character of the Built and Historic Environment (ESD15) LPI PR: The Oxford Green Belt (PR3) LPI PR: Infrastructure Delivery (PR11)	PR10	CDC	
43	Provision of formal sports, play areas and allotments to adopted standards	Ensure open space and amenity infrastructure grows at the same rate as communities and current deficiencies in provision are addressed	Necessary	Short to Long term	TBC	Private developers	CDC Private developers	LPI: Open Space, Outdoor Sport Recreation Provision (BSC10)	All sites	CDC	
43a	Formal sport pitches provision at Land South East Kidlington (PR7a) including 2 3G football pitches and 1 cricket ground	Ensure open space and amenity infrastructure grows at the same rate as	Necessary	Medium term	TBC	Private developers	CDC Private developers	Local Standards of Provision - Outdoor Recreation (BSC11) Green Infrastructure (ESD17)	PR7a	CDC	
43b	Converting existing Hockey AGP at Kidlington and Gosford Leisure Centre to 3G, and increasing its size.	Ensure open space and amenity infrastructure grows at the same rate as	Necessary	Medium term	TBC	Private developers	Private developers	LPI: Improved Transport	All LPI PR sites	CDC	

No.	Projects	Main aim	Priority	Phasing	Costs	Funding	Main Delivery Partners	Policy links	LPI PR site policy	Source	Delivery status
43c	Marked running routes associated with both existing green space and new open space on strategic sites	communities and current deficiencies in provision are addressed	Necessary	Medium term	TBC	Private developers	CDC Private developers	LPI, LTP & Emerging LPI PR Policies and Connections (SLE4) LPI PR: Sustainable Transport (PR4a) LPI PR: Infrastructure Delivery (PR11)	All LPI PR sites	CDC	
43d	Golf course relocation - if relocation needed to be delivered at Land at Frieze Way Farm PR6c		TBC	TBC	TBC	Private developers	CDC Private developers		PR6b PR6c	CDC	
44	Amenity open space, natural and semi natural green space and Parks and Gardens to be provided as part of development in accordance to standards	Ensure open space and amenity infrastructure grows at the same rate as communities and current deficiencies in provision are addressed	Necessary	Short to Long term	TBC	Private developers CDC	CDC Private sector developers	LPI: Open Space, Outdoor Sport Recreation Provision (BSC10) Local Standards of Provision - Outdoor Recreation (BSC11) Green Infrastructure (ESD17) LPI PR: Infrastructure Delivery (PR11)	All LPI PR Sites	CDC	To be delivered through: • Development sites through the planning application process in accordance to Local Plan requirements and Tables 8 and 9. • New provision by public bodies or organisations; and • Public access agreements to privately owned sites.
44a	Extension to Cutteslowe Park (c.11ha) including land set aside for the creation of wildlife habitats and for nature trail/circular walks accessible from the new primary school	Provision of open space and green infrastructure to meet growth needs and addressing changing attitudes towards food growing.	Desirable	Short to Long term	TBC	TBC	CDC Private sector developers	LPI: Open Space, Outdoor Sport Recreation Provision (BSC10) Local Standards of Provision - Outdoor Recreation (BSC11) Green Infrastructure (ESD17) LPI PR: Infrastructure Delivery (PR11)	PR6a	CDC	
44b	Allotments to be provided as in accordance to LPI	Provision of open space and green infrastructure to meet growth needs and addressing changing attitudes towards food growing.	Desirable	Short to Long term	TBC	TBC	CDC Private sector developers	LPI: Open Space, Outdoor Sport Recreation Provision (BSC10) Local Standards of Provision - Outdoor Recreation (BSC11) Green Infrastructure (ESD17) LPI PR: Infrastructure Delivery (PR11)	PR6a PR6b PR9 PR8 PR10	CDC	To be delivered through policy requirement for all sites comprising

No.	Projects	Main aim	Priority	Phasing	Costs	Funding	Main Delivery Partners	Policy links	LPI PR site policy	Source	Delivery status
			Critical Necessary Desirable	St 2018- 2021 Mt 2021 - 2026 Lt 2026 - 2031				(ESD17) LPI PR: Infrastructure Delivery (PR11)			275 + dwellings.
44c	Retention of c. 3 ha of land in agricultural as part of Land East of the Oxford Road (PR6a)		Desirable	Medium term	TBC	TBC	CDC Private sector developers		PR6a	CDC	
44d	Retention of c. 12 ha of land in agricultural as part of Land East of the A44 (PR8)	Provision of open space and green infrastructure to meet growth needs and addressing changing attitudes towards food growing.	Desirable	Medium term	TBC	TBC	CDC Private sector developers	LPI: Open Space, Outdoor Sport/Recreation Provision (BSC10)	PR8	CDC	
44e	Protection of the orchard and waterbody at St. Frideswide Farm	Provision of open space and green infrastructure to meet growth needs and addressing changing attitudes towards food growing.	Desirable	Medium term	TBC	TBC	CDC Private sector developers	Local Standards of Recreation - Outdoor Recreation (BSC11)	PR6a	CDC	
44f	Enhancements to woodland area (along northern boundary of PR6b)	Provision of open space and green infrastructure to meet growth needs and addressing changing attitudes towards food growing.	Desirable	Medium term	TBC	TBC	CDC Private sector developers	Green Infrastructure (ESD17) LPI PR: Infrastructure Delivery (PR11)	PR6b	CDC	
44g	Protection and improvement of Orchard in Stratfield Farm	Provision of open space and green infrastructure to meet growth needs and addressing changing attitudes towards food growing.	Necessary	Medium term	TBC	TBC	CDC Private sector developers	LPI: Open Space, Outdoor Sport/Recreation Provision (BSC10)	PR7b	CDC	
44h	Public open green space as informal canal side parkland on 21 hectares of land as shown	Provision of open space and green infrastructure to meet growth needs and addressing changing attitudes towards food growing.	Necessary	Medium term	TBC	TBC	CDC Private sector developers	Local Standards of Recreation - Outdoor Recreation (BSC11) Green Infrastructure (ESD17) LPI PR: Infrastructure Delivery (PR11)	PR8	CDC	
44i	New community woodland to the north west of PR9 developable area and to the east of Dolton Lane	Provision of open space and green infrastructure to meet growth needs and addressing changing attitudes towards food growing.	Necessary	Medium term	TBC	TBC	CDC Private sector developers	LPI: Open Space, Outdoor Sport/Recreation Provision (BSC10)	PR9	CDC	
44j	New community woodland within Land South East of Woodstock (PR10)	Provision of open space and green infrastructure to meet growth needs and addressing changing attitudes towards food growing.	Necessary	Medium term	TBC	TBC	CDC Private sector developers	Local Standards of Recreation - Outdoor Recreation (BSC11) Green Infrastructure (ESD17) LPI PR: Infrastructure Delivery (PR11)	PR10	CDC	

No.	Projects	Main aim	Priority	Phasing	Costs	Funding	Main Delivery Partners	Policy links	LPI PR site policy	Source	Delivery status
45	Green Infrastructure corridors and active travel : Green Infrastructure network connecting wildlife corridors (including through developable areas), improving existing corridors and improving and protecting hedgerows network and protection of mature trees	Provision of open space and green infrastructure to meet growth needs and facilitate active travel	Necessary	Short to Long term	TBC	TBC	CDC Private sector developers	LPI: Open Space, Outdoor Sport, Recreation Provision (BSC10) Local Standards of Provision - Outdoor Recreation (BSC11) Green Infrastructure (ESD17)	All sites	CDC	
45a	Green infrastructure corridor (c.8 ha) incorporating a pedestrian, wheelchair and all-weather cycle route along PR6a's eastern boundary. Connecting Cuteslowe Park with Oxford Parkway Railway Station/Water Eaton Park and Ride and provide connection with existing ProW network		Necessary	Medium term	TBC	TBC	CDC BBOWT Private sector developers	LPI: Improved Transport and Connections (SLE4) LPI PR: Sustainable Transport (PR4a) LPI PR: Infrastructure Delivery (PR11)	PR6a	CDC	
45b	Green infrastructure network with connected wildlife corridors, including within the developable area. The improvement of the existing network including hedgerows between the proposed Community Woodland at PR9 and Begbroke Wood	Provision of open space and green infrastructure to meet growth needs	Necessary	Medium term	TBC	TBC	CDC OCC BBOWT Private sector developers	LPI: Open Space, Outdoor Sport, Recreation Provision (BSC10) Local Standards of Provision - Outdoor Recreation (BSC11) Green Infrastructure (ESD17) LPI: Improved Transport and Connections (SLE4) LPI PR: Sustainable Transport (PR4a) LPI PR: Infrastructure Delivery (PR11)	PR9		
45c	New publicly accessible Local Nature Reserve (c. 29 ha) based on Rowel Brook at Land East of the A44	Provision of open space and green infrastructure to meet growth needs and facilitate active travel	Necessary	Medium term	TBC	TBC	CDC OCC BBOWT Private sector developers	LPI: Open Space, Outdoor Sport, Recreation Provision (BSC10) Local Standards of Provision - Outdoor Recreation (BSC11) Green Infrastructure (ESD17)	PR8	CDC	
45d	Protection and enhancement of Sandy Lane and Yarnton Lane as green links and wildlife corridors and wildlife		Necessary	Medium term	TBC	TBC	CDC OCC BBOWT Private sector	LPI: Improved Transport and Connections (SLE4) LPI PR: Sustainable Transport (PR4a) LPI PR: Infrastructure Delivery (PR11)	PR8	CDC	

No.	Projects	Main aim	Priority	Phasing	Costs	Funding	Main Delivery Partners	Policy links	LPI PR site policy	Source	Delivery status
	connectivity from Sandy Lane to the proposed Local Nature Reserve at Land east of the A44 (PR8)		Critical Necessary Desirable	St 2018- 2021 Mt 2021 - 2026 Lt 2026 - 2031			developers	LPI: Improved Transport and Connections (SLE4) LPI PR: Sustainable Transport (PR4a) LPI PR: Infrastructure Delivery (PR11)			
45e	Green infrastructure network with connected wildlife corridors, including within the residential area and alongside the railway line. Includes improvement of the existing network including within the Lower Cherwell CTA and to the Rushy Meadows SSI, the Meadows West of the Oxford Canal Local Wildlife Site and to Stratfield Farm (PR7b)	Provision of open space and green infrastructure to meet growth needs and facilitate active travel	Necessary	Medium term	TBC	TBC	CDC OCC BBOWT Private sector developers	LPI: Open Space, Outdoor Sport, Recreation Provision (BSC10) Local Standards of Provision - Outdoor Recreation (BSC11) Green Infrastructure (ESD17) LPI: Improved Transport and Connections (SLE4) LPI PR: Sustainable Transport (PR4a) LPI PR: Infrastructure Delivery (PR11)	PR8	CDC	
45f	Nature conservation area (c.6ha) with potential to link to and extend Stratfield Brake DWS	Enhance natural environment by maximising opportunities for improving biodiversity; including maintenance, restoration and creation of BAP habitats	Necessary	Short to Long term	TBC	TBC	CDC OCC BBOWT Private sector developers	LPI: Protection and Conservation of Biodiversity and the Natural Environment (ESD10) Conservation Target Areas (ESD11) Green Infrastructure (ESD17) LPI PR: Infrastructure Delivery (PR11)	PR7b	CDC	To be delivered following the progression of the Strategic Sites through the planning application process
45g	Community Woodland east of Dolton Lane PR9/Community Woodland on the west ern side of PR10		Necessary	Short to Long term	TBC	TBC	CDC OCC BBOWT Private sector developers		PR9	CDC	
45h	Local Nature Reserve based on Rowel Brook at Land East of the A44 (PR8)	Enhance natural environment by maximising opportunities for	Necessary	Short to Long term	TBC	TBC	CDC OCC BBOWT Private sector	LPI: Protection and Conservation of Biodiversity and the Natural Environment	PR8	CDC	

No.	Projects	Main aim	Priority	Phasing	Costs	Funding	Main Delivery Partners	Policy links	LPI PR site policy	Source	Delivery status
			Critical Necessary Desirable	St.2018- 2021 Mt.2021 - 2026 Lt 2026 - 2031	(where known)	(where known)		(LPI, LTP & Emerging LPI PR Policies)			
45i	Local Nature Reserve based on Frogwelldown Lane DWYS and educational opportunities for PS (PR9)	improving biodiversity; including maintenance, restoration and creation of BAP habitats	Necessary	Short to Long term	TBC	TBC	CDC OCC BBOWT Private sector developers	Conservation Target Areas (ESD11) Green Infrastructure (ESD17) LPI PR: Infrastructure Delivery (PR11)	PR9	CDC	
45j	Local Nature Reserve at Land West of Yarrton. (c.7.8ha) accessible to William Fletcher Primary School		Necessary	Short to Long term	TBC	TBC	CDC OCC BBOWT Private sector developers	LPI: Protection and Conservation of Biodiversity and the Natural Environment (ESD10)	PR9	CDC	
45k	New nature conservation area accessible by the local community		Necessary	Short to Long term	TBC	TBC	CDC OCC BBOWT Private sector developers	Conservation Target Areas (ESD11) Green Infrastructure (ESD17) LPI PR: Infrastructure Delivery (PR11)	PR10	CDC	
46	Development proposals for Land East of the A44 (PR8) are required to undertake an investigation of the former land field site south of Sandy Lane to then remediate the site for a use compatible with the proposals and retained uses in the area as detailed in Policy PR8	Establishing if land contamination has the potential to be present on historic land uses and surrounding area and explore remediation	Desirable	Medium Term	TBC	Private developer	CDC EA Private developer	1996 Local Plan Saved Policy: Development on contaminated Land (ENV12)	PR8	CDC	
47	Ecological Mitigation and Compensation - habitat creation and management.	Enhance natural environment by providing opportunities to improve biodiversity; including maintenance, restoration and creation of BAP habitats	Necessary	Short to Long term	TBC	TBC	CDC OCC BBOT Private sector developers	LPI: Protection and Conservation of Biodiversity and the Natural Environment (ESD10) Conservation Target Areas (ESD11) (ESD17) LPI PR: Infrastructure Delivery (PR11)	All LPI PR sites PR6a PR7a PR7b PR9	CDC CDC	To be delivered following the progression of the Strategic Sites through the planning application process
47a	Farmland bird compensation required from proposals for site policies PR6a, PR7a, PR7b, PR9 and PR10										

No.	Projects	Main aim	Priority	Phasing	Costs	Funding	Main Delivery Partners	Policy links	LPI PR site	Source	Delivery status
47b	A nature conservation area on c. 12.6 ha of land to the east of the railway line, south of the Oxford Canal and north of Sandy Lane		Critical Necessary Desirable Necessary	St 2018- 2021 Mt 2021 - 2026 Lt 2026 - 2031 Short to Long term	TBC	TBC	CDC OCC BBOT Private sector developers	(LPI, LTP & Emerging LPI PR Policies)	PR8	CDC	To be delivered following the progression of the Strategic Sites through the planning application process
47c	Protection and enhancement of existing wildlife corridors, including along Frogwelldown Lane District Wildlife Site and Dolton Lane, and the protection of existing hedgerows and trees	Enhance natural environment by providing opportunities to improve biodiversity; including maintenance, restoration and creation of BAP habitats	Necessary	Short to Long term	TBC	TBC	CDC OCC BBOT Private sector developers	LPI: Protection and Conservation of Biodiversity and the Natural Environment (ESD10) Conservation Target Areas (ESD11) Green Infrastructure (ESD17) LPI PR: Infrastructure Delivery (PR11)	PR9		
47d	Examination of provision of wildlife corridors over or under the A34 and A4260 (Frieze Way) to Stratfield Break DWS	Enhance natural environment by maximising opportunities for improving biodiversity; including maintenance, restoration and creation of BAP habitats	Necessary	Short to Long term	TBC	TBC	CDC OCC BBOT Private sector developers	LPI: Protection and Conservation of Biodiversity and the Natural Environment (ESD10)	PR6b	CDC	
48	Restoration, maintenance, new habitat creation at Lower Cherwell Conservation Target Area	Restoration, maintenance, new habitat creation at Lower Cherwell Conservation Target Area	Necessary	Short to Long term	TBC	TBC	CDC OCC BBOWT Private sector developers	Conservation Target Areas (ESD11) Green Infrastructure (ESD17) LPI PR: Infrastructure Delivery (PR11)	PR7b	CDC	

Appendix 5 - Monitoring Framework

Partial Review of the Cherwell Local Plan 2011-2031 (Part 1) – Proposed Submission Appendix 5 – Monitoring Framework

Plan Monitoring Schedule

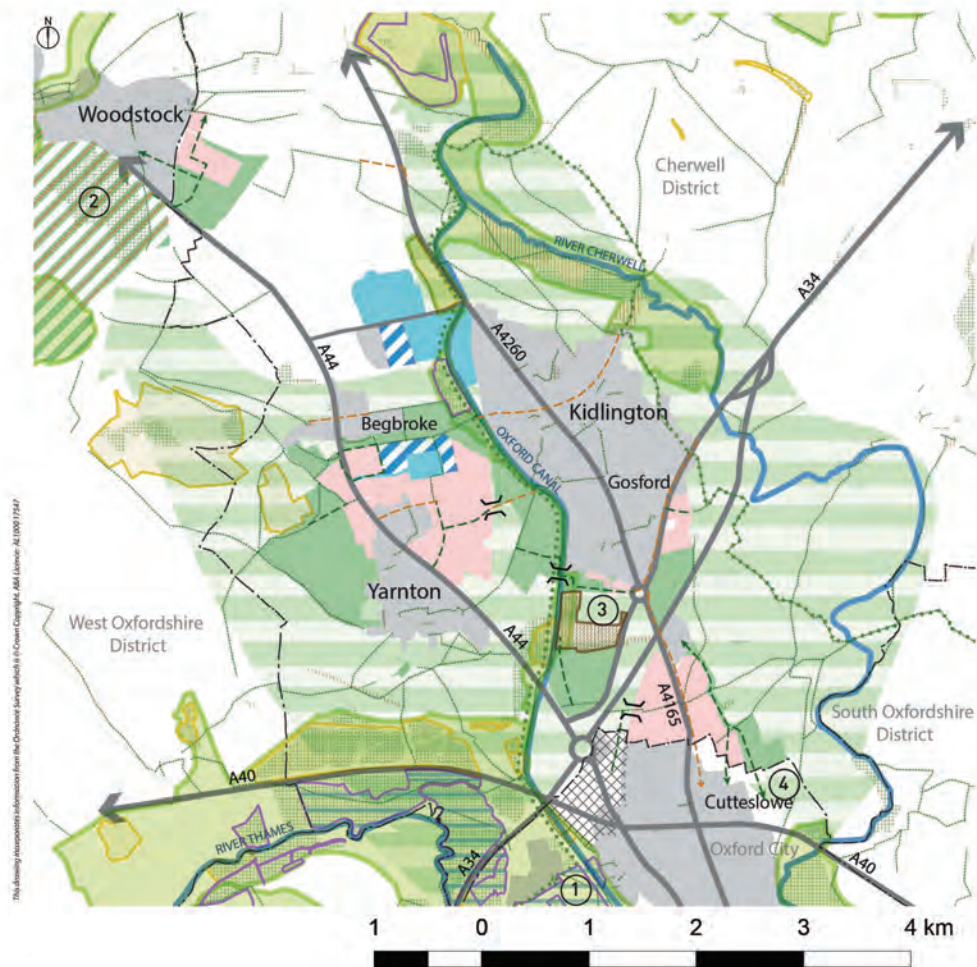
Policy Reference	Policy Title	Local Plan Indicators	Targets
PR1	Achieving Sustainable Development for Oxford's Needs	4,400 homes – commitments and completions Delivering the Vision, objectives and Policies in the Plan Delivery of the Infrastructure Schedule and Infrastructure Plan requirements	Deliver the requirements of Policy PR1: Sites delivered by 2031 Delivery of Infrastructure requirements
PR2	Housing Mix, Tenure and Size	Net affordable housing completions/acquisitions per tenure, mix and size that specifically meet the needs of Oxford City. -80% affordable/social rent -20% intermediate affordable -25 -30% - 1 bed -30 -35% - 2 bed -30 -35% - 3 bed -5 -10% - 4+ beds Mix of sizes of market homes – create socially mixed and inclusive communities Provision for key workers as part of both affordable and market homes Self-build or self –finish housing	Deliver the requirements of Policy PR2.
PR3	The Oxford Green Belt	Removal of areas of land in association with the strategic development sites PR6a – 32.09 ha PR6b – 31.5 ha PR7a – 10.75 ha PR8 – 111.79 ha PR9 – 17.6 ha PR3a – 7.5 ha PR3b – 0.7 ha PR3c – 12.77 ha PR3d – 9.2 ha PR3e – 14.7 ha	Safeguarding of land beyond plan period for development Establish clear permanent boundaries to the Green Belt

Policy Reference	Policy Title	Local Plan Indicators	Targets
		Safeguarding of land identified in the policy	
PR4a	Sustainable Transport	Strategic sites to provide proportionate financial contributions directly related to the development for: Highway improvements to Infrastructure and services for public transport Provision of land to support implementation of schemes in LTP4, A44/A4260 and other transport mitigation assessment Improved bus service <ul style="list-style-type: none"> • A44/A4144 corridor • A4260/A4165 • Cross corridors: Langford Lane, Frieze Way. 	Deliver policy PR4a: Secure proportionate financial contributions for sustainable transport from strategic sites. Identify schemes for delivery S106 legal agreements for transport delivery with timescales. Include transport provision in masterplans for strategic sites
PR4b	Kidlington Centre	Sustainable transport improvements Associated infrastructure Improve natural and built environment	Deliver Policy PR4b and Kidlington Masterplan
PR5	Green Infrastructure	Protect and enhance green infrastructure (GI) Incorporate existing GI in new layouts Connect existing and new GI Restore and/or recreate habitats in new development Protect existing trees and new planting Provide GI along movement corridors Maintain GI GI benefits to the Green Belt Multi-functioning GI	Deliver Policy PR5: Secure Green Infrastructure improvements
PR6a	Land East of Oxford Road	Deliver 650 dwellings (net) on 24 ha of land Sustainable Development 50% affordable homes 3 Form entry Primary School 0.5 ha Local Centre Formal sports, play areas and allotments 11 hectares of Public green space and extension to Cutteslowe Park	Deliver Policy PR6a: Preparation of Development Brief

Policy Reference	Policy Title	Local Plan Indicators	Targets
		Green infrastructure corridor on 8 ha with all public benefits listed in the policy.	
PR6b	Land West of Oxford Road	Residential completions	Deliver policy PR6b: Preparation of Development Brief
PR6c	Land at Frieze Farm	Residential completions	Deliver policy PR6c: Preparation of Development Brief
PR7a	Land South East of Kidlington	Residential completions	Deliver policy PR7a Preparation of Development Brief
PR7b	Land at Stratfield Farm	Residential completions	Deliver policy PR7b Preparation of Development Brief
PR8	Land East of the A44	Residential completions	Deliver policy PR8 Preparation of Development Brief
PR9	Land West of Yarnton	Residential completions	Deliver policy PR9 Preparation of Development Brief
PR10	Land South East of Woodstock	Residential completions	Deliver policy PR10 Preparation of Development Brief
PR11	Infrastructure Delivery	Projects contained in the Infrastructure Schedule accompanying the adopted LPI PR and their delivery according to its phasing Prepare and provide Infrastructure Schedule updates in cooperation with relevant infrastructure partners	Key Infrastructure to be delivered in accordance with LPI PR Infrastructure Schedule
PR12a	Delivering Sites and	Ensuring delivery of sites and demonstrating	Monitoring of

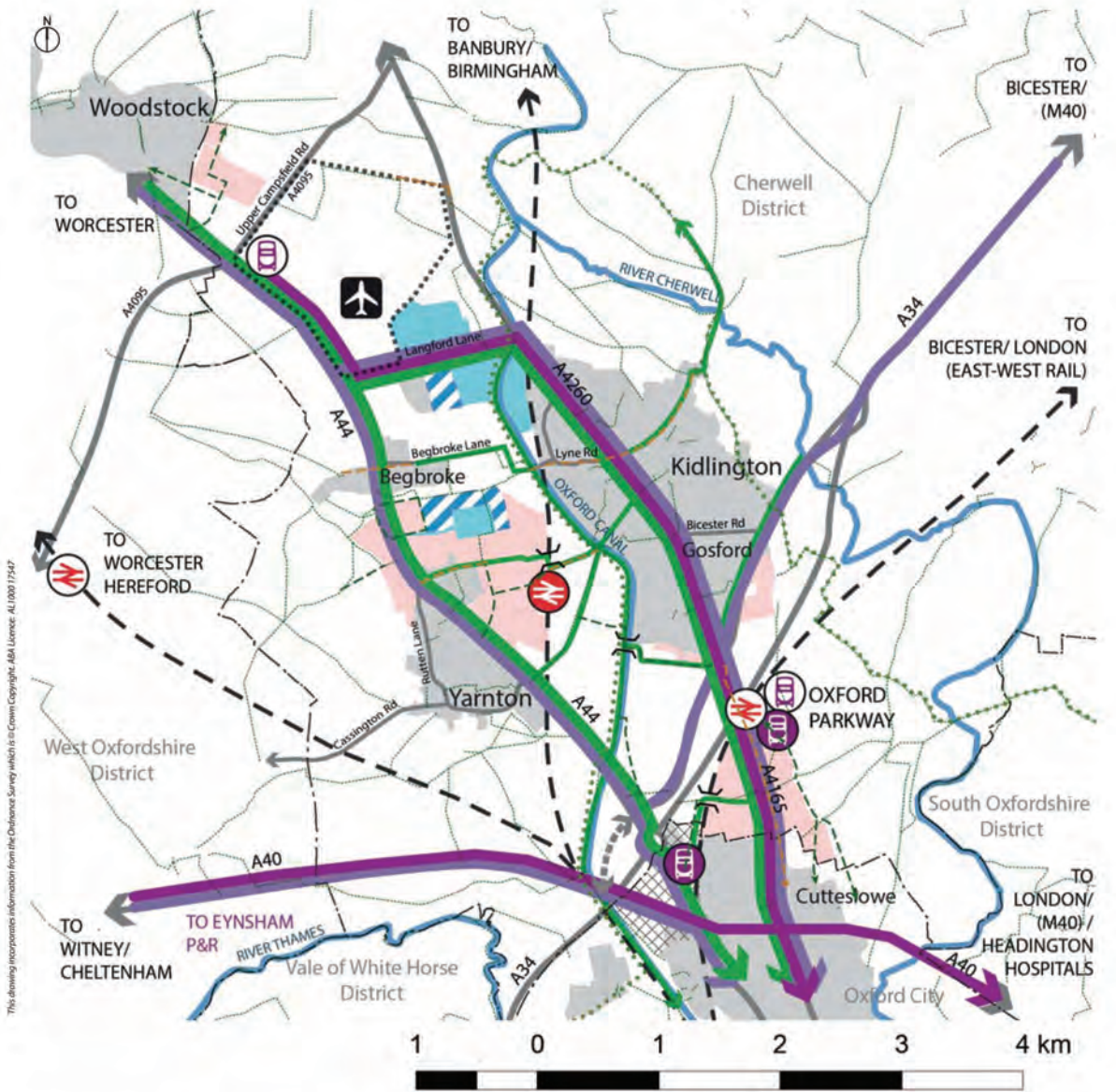
Policy Reference	Policy Title	Local Plan Indicators	Targets
	maintaining Housing Supply	a 5 year housing land supply	housing delivery and progress of sites in the Council's AMR including 5 year housing land supply calculations
PR12b	Sites Not Allocated in the Partial Review	If delivery of LPI PR housing falls below 95% of the LPI PR housing target for a period of 3 years, CDC will publish an action plan and will indicate whether the requirements of Policy PR12b should be triggered.	Deliver LPI PR site policies in accordance to the Plans Housing Trajectory

Appendix 6 - Thematic Maps



Green Corridors - For Illustrative Purposes Only

District boundaries	District Wildlife Site	Existing public right of way
Primary waterways	Local Wildlife Site	Proposed new walking route
Strategic green corridor	SSSI	Proposed walking route on street
Existing settlement	Habitat of Principal Importance (NERC S41 Act, previously BAP)	Green Belt Way
Proposed growth	Conservation Target Area	Key green infrastructure
Existing employment area	Woodland Trust Site	Proposed green infrastructure and formal recreation provision
Proposed employment area	Special Areas of Conservation	1 SSSI Port Meadow SSSI
Oxford City proposed Northern Gateway development	World Heritage Site	2 Blenheim Palace
Registered Park and Garden		3 Stratfield Brake
		4 Cutteslowe Park



This drawing incorporates information from the Cherwell Survey which is Crown Copyright. All Rights Reserved. Licence: AL 1000 17547

Sustainable Movement Thematic Plan - For Illustrative Purposes Only

- | | | |
|---|-----------------------------------|--|
| Key | Rail lines | Bus Rapid Transit |
| District boundaries | Existing rail station | Other Park & Ride and premium bus routes |
| Primary waterways | Potential new rail station | Strategic cycle routes |
| Existing settlement | London Oxford Airport | Other key cycle routes |
| Proposed growth | Existing Park & Ride | Pedestrian / cycle bridges (wheelchair accessible) |
| Existing employment area | New or expanded Park & Ride | Existing public right of way |
| Proposed employment area | County Council proposed link road | Proposed new walking route |
| Oxford City proposed Northern Gateway development | | Proposed walking route on street |
| | | Green Belt Way |

Appendix 7 - Evidence Base

For a list of evidence base please visit
<http://www.cherwell.gov.uk/index.cfm?Articleid=11183>.

Appendix 8 - Glossary

Phrase	Definition
Adoption	The formal approval, after independent examination, of the final version of a Local Plan by a local planning authority so that it becomes part of the statutory Development Plan.
Affordable Housing	Includes affordable rented, social rented and intermediate housing, provided to specified eligible households whose needs are not met by the market. Defined by the National Planning Policy Framework (NPPF).
Annual (or Authorities) Monitoring Report (AMR)	A report assessing the progress of a Local Planning Authority in producing its key planning policy documents and the extent to which Local Plan policies are being successfully implemented.
Appropriate Assessment	A process required by European Directives (Birds Directive 79/409/EEC and Habitats Directive 92/43/EEC) to avoid adverse effects of plans, programmes and projects on Natura 2000 sites and thereby maintain the integrity of the Natura 2000 network and its features.
Area Action Plan (AAP)	A type of Development Plan document focused upon an area which will be subject to significant change.
Biodiversity	A collective term for plants, animals, micro-organisms and bacteria which, together, interact in a complex way to create living ecosystems.
Climate Change	The lasting and significant change in weather patterns over periods ranging from decades to hundreds of years, impacting on river and sea levels and the rate of flows on watercourses.
Conservation Area	A locally and statutorily designated area of special architectural interest, where the character or appearance is desirable to preserve or enhance.
Development Plan	The statutory term used to refer to the adopted spatial plans and policies that apply to a particular local planning authority area.

Phrase	Definition
	This includes adopted Local Plans (including Minerals and Waste Plans) and Neighbourhood Development Plans and is defined by Section 38 of the Planning and Compulsory Purchase Act 2004.
Duty to Cooperate	A statutory duty placed on public bodies to cooperate constructively, actively and on an on-going basis to maximise the effectiveness of Local Plan preparation in the context of strategic cross boundary matters.
Examination	The process by which an independent Planning Inspector considers whether a Local Plan is 'sound' before it is adopted.
Flood Zones	Areas of land assessed as being of low risk (Flood Zone 1), medium (Flood Zone 2), high (Flood Zone 3a) flood risk and the functional floodplain (Flood Zone 3b).
Green Belt	A policy designation for defined areas of land around specific cities and large built-up areas, which aims to keep this land permanently open or largely undeveloped.
Habitats Regulations Assessments (HRA)	HRA is required under the European Directive 92/43/ECC on the "conservation of natural habitats and wild fauna and flora for plans" that may have an impact of European (Natura 2000) Sites. HRA is an assessment of the impacts of implementing a plan or policy on a Natura 2000 Site.
Housing and Economic Land Availability Assessment (HELAA)	An assessment of land availability, suitability and deliverability for housing and employment generating development.
Infrastructure	All the ancillary works and services which are necessary to support human activities, including roads, sewers, schools, hospitals, etc.
Infrastructure Delivery Plan (IDP)	The IDP's role is to identify all items of infrastructure needed to ensure the delivery of the growth targets and policies contained in the Local Plan. This ensures that an appropriate supply of essential infrastructure is provided alongside new homes, workplaces and other forms of development.

Phrase	Definition
Local Plan	The plan for the local area which sets out the long-term spatial vision and development framework and strategic policies and proposals to deliver that vision. The Cherwell Local Plan 2011-2031 (Part 1) was adopted in July 2015.
Local Transport Plan (LTP)	A transport strategy prepared by the local highways authority (the County Council).
National Planning Policy Framework (NPPF)	A document setting out the Government's planning policies to be followed in preparing Local Plans and determining planning applications.
National Planning Practice Guidance (NPPG or PPG)	The Government's planning guidance supporting national planning policy.
Objectively Assessed Need for housing (OAN)	The amount and mix of housing and the range of tenures that is likely to be needed in the defined housing market area over a defined period. The assessment is made without consideration of policy or other constraints. Assessed by the Strategic Housing Market Assessment.
Oxford-Milton Keynes-Cambridge Corridor (sometimes the Oxford-Cambridge corridor)	A spatial concept focused on the economic influence of Oxford, Milton Keynes and Cambridge. The aim of this is to promote and accelerate the development of the unique set of educational, research and business assets and activities.
Oxfordshire Growth Board	A joint committee of local authorities in Oxfordshire and including other non-voting members. Through the Oxfordshire Growth Board the Oxfordshire authorities are working together under the legal 'Duty to Cooperate'.
Oxfordshire Housing Market Area (HMA)	The sub-regional housing market that Cherwell falls within. It includes the whole of the county of Oxfordshire. Defined by the Strategic Housing Market Assessment.
(Oxfordshire) Strategic Housing Market Assessment (SHMA)	A study which contains an objective assessment of housing needs in accordance with Government policy and guidance. It does not apply constraints to the level of need.
Planning & Compulsory Purchase Act 2004	Primary legislation providing many of the requirements for the production of Local Plans including the 'Duty to Cooperate' introduced by the Localism Act 2011.

Phrase	Definition
Policies Map	Maps of the local planning authority's area illustrating geographically the application of the policies in the adopted development plan. Where the adopted policies map consists of text and maps, the text prevails if the map and text conflict.
Special Areas of Conservation (SAC)	A SAC is an area which has been given special protection under the European Union's Habitats Directive.
Strategic Environmental Assessment (SEA)	An assessment of the environmental effects of policies, plans and programmes, required by European legislation. Informs the preparation of Local Plans through a 'Sustainability Appraisal'.
Strategic Flood Risk Assessment (SFRA)	An assessment carried out by local authorities to inform their knowledge of flooding, refine the information on the Flood Map and determine the variations in flood risk from all sources of flooding across and from their area.
Submission	The stage at which a Local Plan is sent to the Secretary of State for independent examination.
Supplementary Planning Documents (SPDs)	Documents which provide statutory guidance to supplement the policies and proposals in Local Plans.
Sustainability Appraisal (SA)	The process of assessing the economic, social and environmental effects of a proposed plan. This process implements the requirements of the SEA Directive. Required to be undertaken for all Local Plans.

